

*Franklyn  
James*

Arden Crescent, E14 9WA

£475,000

*Franklyn  
James*



Arden Crescent, E14 9WA

£475,000

- Dock-facing
- Bright open-plan living area
- Chain free sale
- Exceptional views over Millwall Outer Dock and Canary Wharf skyline
- Parking

EPC rating-  
Tax band- E



CHAIN FREE Enjoying far-reaching, uninterrupted views over Millwall Outer Dock and the Canary Wharf skyline, this well-presented two double bedroom apartment offers an excellent balance of space, comfort, and location. and offered chain free,

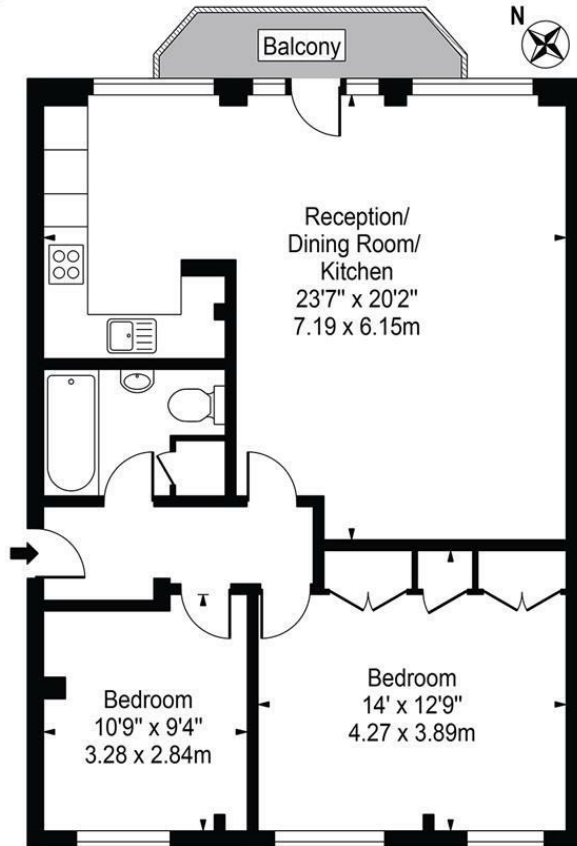
The bright and generous living area benefits from floor-to-ceiling windows, drawing in plenty of natural light, and opens onto a sizeable dock-facing private balcony — an ideal space to unwind or entertain while taking in the stunning direct outlook over Millwall Outer Dock.

Fitted open-plan kitchen plentiful storage, and and freestanding appliances,

Both double bedrooms are well-proportioned and enjoy natural light,

# Quay View Apartments

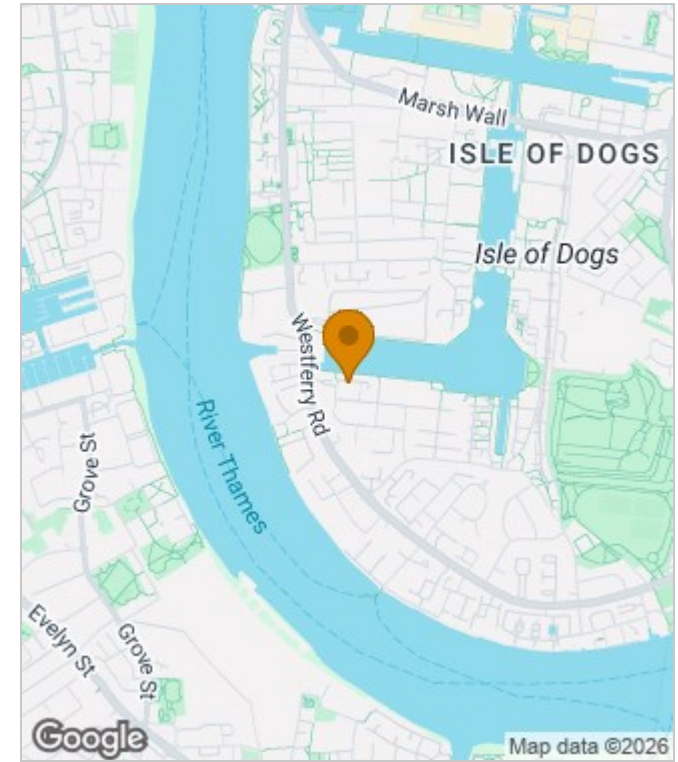
Approx. Gross Internal Area 794 Sq Ft - 73.76 Sq M



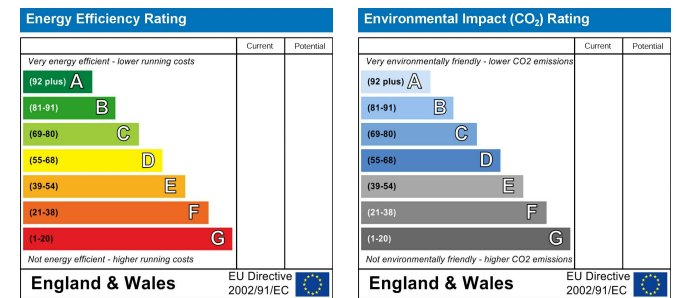
**First Floor**  
For Illustration Purposes Only - Not To Scale

This floor plan should be used as a general outline for guidance only and does not constitute in whole or in part an offer or contract. Any intending purchaser or lessee should satisfy themselves by inspection, searches, enquiries and full survey as to the correctness of each statement. Any areas, measurements or distances quoted are approximate and should not be used to value a property or be the basis of any sale or let.

## Area Map



## Energy Performance Graph



These particulars, whilst believed to be accurate are set out as a general outline only for guidance and do not constitute any part of an offer or contract. Intending purchasers should not rely on them as statements of representation of fact, but must satisfy themselves by inspection or otherwise as to their accuracy. No person in this firm's employment has the authority to make or give any representation or warranty in respect of the property.